

**MIAMI**

11321 NW 112th Court  
Medley, FL 33178  
800.567.1480 or  
305.825.9000  
Fax 305.823.6614

**JACKSONVILLE**

2885 St. Clair Street  
Jacksonville, FL 32254  
866.358.5900 or  
904.359.5900  
Fax 904.359.5901

**ARCADIA**

3144 Highway 17 NE  
Arcadia, FL 34266  
877.490.0990 or  
863.491.0990  
Fax 863.491.8990

**Tremron**  
GROUP *we make it easy*

[tremrongroup.com](http://tremrongroup.com)

Cover Photo: Mega Olde Towne in Old Chicago

**Tremron**  
GROUP *we make it easy*

## Hardscape Collections

*Pavers.  
Natural Stone.  
Retaining Walls.  
Erosion Control Products.*





**Tremron Group**  
**Hardscape**  
**Collections**

<b>2 3/8" Pavers</b>	<b>3</b>
<b>2 3/8" Tumbled Pavers</b>	<b>25</b>
<b>1" Pavers</b>	<b>37</b>
<b>Bullnose</b>	<b>45</b>
<b>Natural Stone</b>	<b>49</b>
<b>Retaining Walls</b>	<b>55</b>
<b>Erosion Control Products</b>	<b>61</b>
<b>Paver Care Products</b>	<b>67</b>
<b>Colors Selection</b>	<b>71</b>



Estate with Park Plaza12x12 Insets and 4x8 Bullnose in Sand Dune



Welcome to style, elegance, ease and the most customer-focused service in the hardscape industry. At Tremron, we make it easy for you to elevate the beauty and value of your residential, commercial, industrial or civic hardscape project with quality craftsmanship and exquisite design. Our three Florida manufacturing plants offer the highest-quality interlocking brick pavers, hardscape and retaining wall products in America. And we back every product, for every job, with superior customer service, on-time delivery and unsurpassed ease in selection and ordering.

**Welcome to Tremron Group**

Easy selection. Easy ordering. Easy delivery.

That’s the promise of the Tremron team. With the most extensive manufactured product line in the Southeast, we are a *complete solution for your hardscape needs*—from pavers and natural stone to retaining walls and erosion control. And you can be sure that the hardscape products you order from Tremron will be consistent and coordinated in terms of color, quality and composition for easy success, every time.

Our catalog offers a simple and informative guide to our full line of pavers, natural stone, retaining walls, erosion control products, cleaners and sealants. Please note all size shown in this catalog are rounded to the nearest 1/8". If you need additional information, we are only a phone call or e-mail away, or you can visit our website at [www.tremrongroup.com](http://www.tremrongroup.com).

**Beauty. Quality. Value. We make it easy.**





Mega Olde Towne Tumbled in Sierra.



Brick 4x8 in Riverwood

## *2 3/8" Pavers to Suit Any Style*

Tremron's concrete pavers add beauty, value and timeless appeal to any home, commercial, industrial or civic project. Unlike rigid pavement, pavers can be installed in any shape or in any pattern to complement existing landscaping and hug organic, natural lines. Our pavers are designed for longevity and are manufactured for tolerance and strength, which means they can stand up to weight, weather and extremes of heat. Tremron's pavers offer endless possibilities for creative design and artistic style, while never sacrificing practicality or function.

Choose Tremron for your next hardscape project. Our pavers are perfect for commercial or residential pool decks, driveways, lanais, pathways, garden paths, patios, streetscapes, courtyards, plazas, pedestrian malls and much more.



Product shown  
in Old Chicago.

Also available in  
all standard colors;  
please see pages  
71-73 for more  
information.



## Olde Towne

Add classic European elegance to your hardscape project. The natural cobblestone look, achieved through the random patterning of three sizes of stone, lends long-lasting beauty and old-world charm to any paving project.

Olde Towne 6x6 and 6x9 can be ordered separately.



4 3/4"



6 1/4"

6 1/4"



6 1/4"

6 1/4"



9 1/2"

*Shade variation is inherent in all-natural materials. Colors may vary depending upon manufacturing location. Individual product measurements given are rounded. Contact your Tremron Sales Representative or visit our website for exact dimensions.*



Olde Towne in Old Chicago



Product shown  
in Sierra.

Also available in  
all standard colors;  
please see pages  
71-73 for more  
information.



# Mega Olde Towne

Mega Olde Towne provides all the charm of Olde Towne in larger sizes for an even more dramatically classic profile. Three sizes of stones can be installed in random patterning to create an even more rustic and authentic look. Available in 1" in Summer 2008 and in 3 1/8" in Fall 2008.



Shade variation is inherent in all-natural materials. Colors may vary depending upon manufacturing location. Individual product measurements given are rounded. Contact your Tremron Sales Representative or visit our website for exact dimensions.

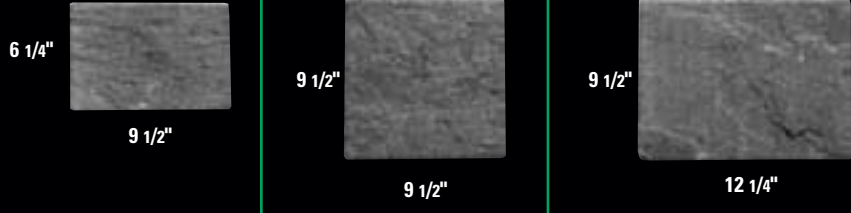


Product shown  
in Sherwood.

Also available in  
all standard colors;  
please see pages  
71-73 for more  
information.

# Stonehurst

Available in the same size variations as Mega Olde Towne but with a natural slate finish to suggest traditional stone detailing, Stonehurst is the paver of choice for projects requiring a vintage, natural slate texture. Available in 1" in Summer 2008 and in 3 1/8" in Fall 2008.



Also available in tumbled variety.

Shade variation is inherent in all-natural materials. Colors may vary depending upon manufacturing location. Individual product measurements given are rounded. Contact your Tremron Sales Representative or visit our website for exact dimensions.



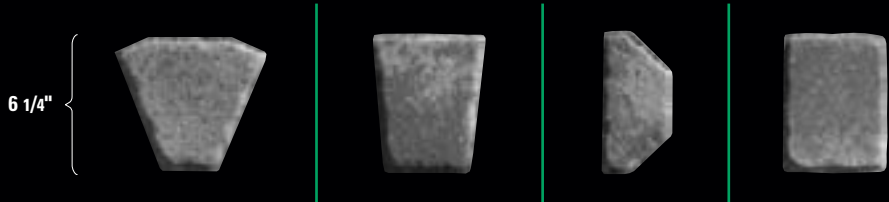
Product shown  
in Charcoal.

Also available in  
all standard colors;  
please see pages  
71-73 for more  
information.



# Romanesque Circles

Romanesque's four different shapes  
in proper combination create circles  
that can unify your project with the  
landscape around it. One pallet creates  
a six-foot circle, which can then be  
combined with Olde Towne for larger  
circles. Circular designs are ideal for  
large-scale projects where grandeur  
and drama are desired.

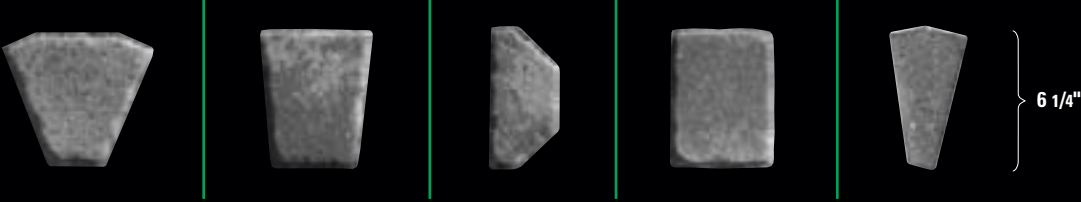


Shade variation is inherent in all-natural materials. Colors may vary depending upon manufacturing location. Individual product measurements given are rounded. Contact your Tremron Sales Representative or visit our website for exact dimensions.



Product shown  
in Ortega.

Also available in  
all standard colors;  
please see pages  
71-73 for more  
information.



Shade variation is inherent in all-natural materials. Colors may vary depending upon manufacturing location. Individual product measurements given are rounded. Contact your Tremron Sales Representative or visit our website for exact dimensions.



Product shown  
in Heritage.

Also available in  
all standard colors;  
please see pages  
71-73 for more  
information.



# Brick 4 X 8

A favorite with architects and landscape designers for both commercial and residential projects, our Brick 4 X 8 offers the contemporary sophistication of a simple brick shape to make your choice of patterns virtually unlimited. Also available in 3 1/8" thickness for industrial and DOT applications.



Shade variation is inherent in all-natural materials. Colors may vary depending upon manufacturing location. Individual product measurements given are rounded. Contact your Tremron Sales Representative or visit our website for exact dimensions.

Product shown  
in Oak Run.

Also available in  
all standard colors;  
please see pages  
71-73 for more  
information.

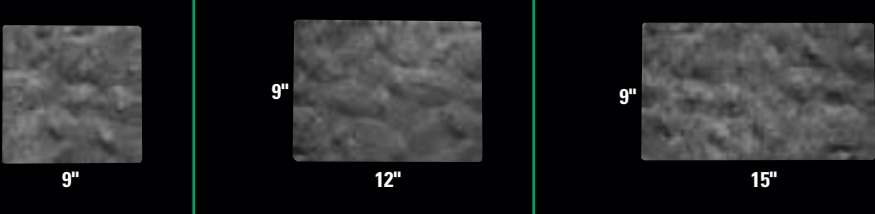


# Vienna

Larger and thicker than a standard paving stone and well-suited for projects that demand grandeur and nostalgia. Produced with a textured top, Vienna can also be installed upside-down to provide a smoother finish.



Vienna pavers are manufactured 2 3/4" thick.



Shade variation is inherent in all-natural materials. Colors may vary depending upon manufacturing location. Individual product measurements given are rounded. Contact your Tremron Sales Representative or visit our website for exact dimensions.





Product shown  
in Sand Dune.

Also available in  
all standard colors;  
please see pages  
71-73 for more  
information.



## Park Plaza

Park Plaza shapes can create some of the most classic designs in landscape architecture. Use like-sized stones together or mix-and-match with other products to create an unlimited number of design possibilities. Available in four sizes: 6" X 6", 8" X 8", 12" X 12" and 16" X 16".

6"



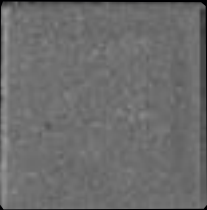
6"

8"



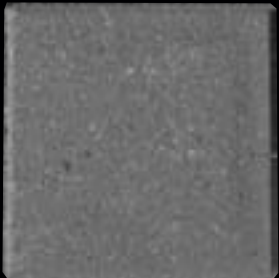
8"

12"



12"

16"



16"

*Shade variation is inherent in all-natural materials. Colors may vary depending upon manufacturing location. Individual product measurements given are rounded. Contact your Tremron Sales Representative or visit our website for exact dimensions.*



Product shown  
in Heritage.

Also available in  
all standard colors;  
please see pages  
71-73 for more  
information.



# Estate Paver

Ideal for large-scale projects, including courtyards, plazas, pedestrian malls and commercial pool decks. Use Estate Pavers alone or in combination with Park Plaza 8" X 8" or 12" X 12" to create two unique patterns.



11 3/8"



11 3/8"

*Shade variation is inherent in all-natural materials. Colors may vary depending upon manufacturing location. Individual product measurements given are rounded. Contact your Tremron Sales Representative or visit our website for exact dimensions.*



Product shown  
in Ash.

Also available in  
all standard colors;  
please see pages  
71-73 for more  
information.

# Cobblestone

Create large-scale, old world elegance with a single interlocking stone paver. Cobblestone results in a pleasing paved surface for any commercial or residential application.



4 5/8"



9 3/8"

*Shade variation is inherent in all-natural materials. Colors may vary depending upon manufacturing location. Individual product measurements given are rounded. Contact your Tremron Sales Representative or visit our website for exact dimensions.*



Product shown in Mahogany Ash.

Also available in all standard colors; please see pages 71-73 for more information.



Décor

Its combination of two different shapes into one interlocking stone has made Décor a very popular choice for both residential and commercial projects. Choose a look with modern, simple installation and classic, timeless beauty. Also available in 3 1/8" thickness for industrial and DOT applications.



Shade variation is inherent in all-natural materials. Colors may vary depending upon manufacturing location. Individual product measurements given are rounded. Contact your Tremron Sales Representative or visit our website for exact dimensions.

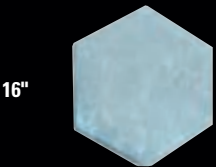


Product shown in Natural and Charcoal.

Also available in all standard colors; please see pages 71-73 for more information.

Hexagon

The imposing 16" profile of our Hexagon pavers mimics the old Colonial sidewalks of the Northeast. Originally developed for Jacksonville's historic Riverside community, Hexagon suggests the vintage Victorian appeal of turn-of-the-century city streetscapes.



Shade variation is inherent in all-natural materials. Colors may vary depending upon manufacturing location. Individual product measurements given are rounded. Contact your Tremron Sales Representative or visit our website for exact dimensions.





Product shown in Timberwood with Insets and Border in Coral.

Also available in all standard colors; please see pages 71-73 for more information.



# Bishop Hat

Whether used by itself or in combination with Park Plaza 8" X 8", Bishop Hat's triangular profile provides a distinctive look for any project. Many different geometric patterns can be created with Bishop Hat and Park Plaza.



Bishop Hat in Riverwood with Park Plaza 8x8 in Coral

*Shade variation is inherent in all-natural materials. Colors may vary depending upon manufacturing location. Individual product measurements given are rounded. Contact your Tremron Sales Representative or visit our website for exact dimensions.*



Product shown in Red, Tan, Charcoal.

Also available in all standard colors; please see pages 71-73 for more information.



Mini-Brick

With its small size and attractive appearance, Mini-Brick offers virtually unlimited opportunities for exquisite designs. Mini-Brick can create very attractive and intricate laying patterns. The look is refined, elegant and precise.



2 3/8"

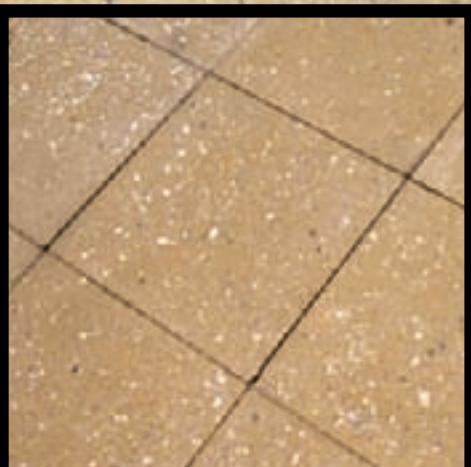


8"

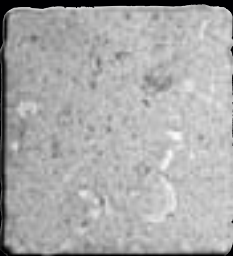


Shellstone

Available in 4" X 8", 12" X 12" and 16" X 16" sizes, this ground-face product blends oyster shells and coquina with our standard paver formula. The pavers are then ground to expose the shells and aggregates inside, creating an exposed coquina-shell finish with an airy coastal appeal for borders, pool decks, lanais, walkways and porches and more.



16"



16"

12"



12"

4"



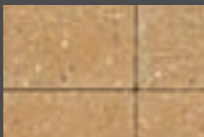
8"

Product shown in Ivory.

Available in:



Coral



Sandstone



Ivory



White

Shade variation is inherent in all-natural materials. Colors may vary depending upon manufacturing location. Individual product measurements given are rounded. Contact your Tremron Sales Representative or visit our website for exact dimensions.

Shade variation is inherent in all-natural materials. Colors may vary depending upon manufacturing location. Individual product measurements given are rounded. Contact your Tremron Sales Representative or visit our website for exact dimensions.



Product shown  
in Heritage.

Also available in  
all standard colors;  
please see pages  
71-73 for more  
information.



# Squares and Rectangles

Squares and Rectangles can provide the nostalgic, natural look of old granite cobblestone. These pavers give any project the look of a French chateau or Victorian garden.



4 1/2"



4 1/2"

4 1/2"



6 3/4"

Shade variation is inherent in all-natural materials. Colors may vary depending upon manufacturing location. Individual product measurements given are rounded. Contact your Tremron Sales Representative or visit our website for exact dimensions.



Product shown  
in Charcoal.

Also available  
in Red.

# Brick 4 X 8 ADA

The same simple brick shape as our popular Brick 4 X 8, but with the added benefit of detectable warnings for the vision impaired.

Meets ADA requirements



8"



4"

Shade variation is inherent in all-natural materials. Colors may vary depending upon manufacturing location. Individual product measurements given are rounded. Contact your Tremron Sales Representative or visit our website for exact dimensions.





Vienna Tumbled in Oak Run



Olde Towne Tumbled in Sand Dune

# *Tumbled Pavers for Aged European Elegance*

Give your next paving project a natural, nostalgic look with the timeless style of Tremron's tumbled stone collection.

The process of producing tumbled stone is simple and time-tested. Controlled chipping of the edges creates a softer, more antiqued appearance. The final tumbled stone features an intentionally distressed edge that will make your pavers look as though they've been part of your landscape project for years and years. Tumbled stones offer a suggestion of old-world European elegance to driveways, paths, patios and even pool decks — anywhere an aged or pleasantly distressed surface is desired.



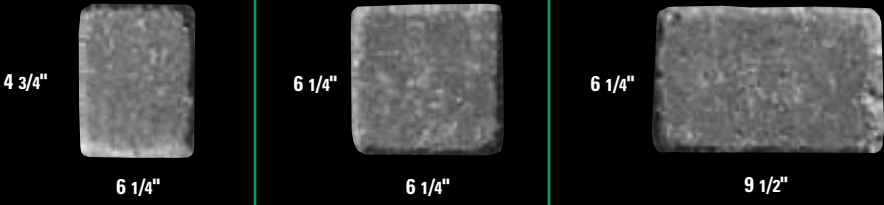
Product shown  
in Sand Dune.

Also available in  
all standard colors;  
please see pages  
71-73 for more  
information.



# Olde Towne Tumbled

Three size variations combine for classic European elegance in this rugged tumbled version of a popular paver suggestive of the cobbled streets of days gone by.



Shade variation is inherent in all-natural materials. Colors may vary depending upon manufacturing location. Individual product measurements given are rounded. Contact your Tremron Sales Representative or visit our website for exact dimensions.

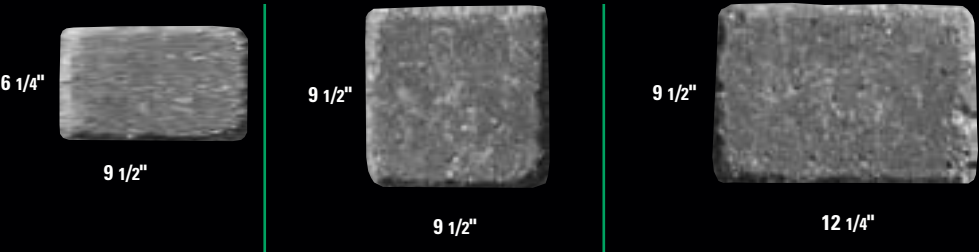


Product shown  
in Sierra.

Also available in  
all standard colors;  
please see pages  
71-73 for more  
information.

# Mega Olde Towne Tumbled

Tumbled Mega Olde Towne offers dramatic European elegance to residential driveways, paths, patios and even pool decks—anywhere an aged or ruggedly distressed surface is desired.



Shade variation is inherent in all-natural materials. Colors may vary depending upon manufacturing location. Individual product measurements given are rounded. Contact your Tremron Sales Representative or visit our website for exact dimensions.



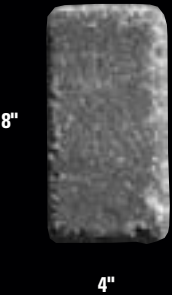
Product shown  
in Red.

Also available in  
all standard colors;  
please see pages  
71-73 for more  
information.



# Brick 4 X 8 Tumbled

Tumbled to create a ruggedly distressed look, this popular 4" X 8" brick is flexible and creative. Its worn appearance mimics the city streetscapes of historic Philadelphia or Chicago.

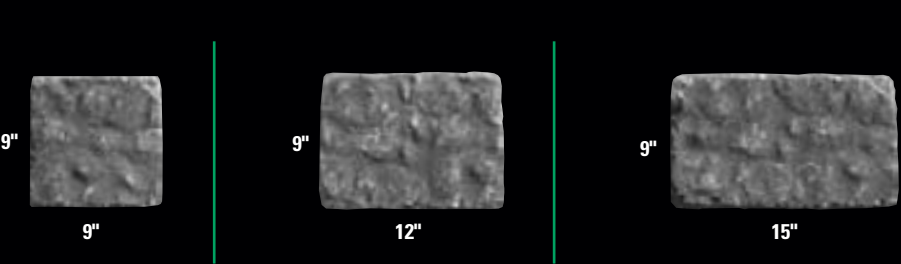


Shade variation is inherent in all-natural materials. Colors may vary depending upon manufacturing location. Individual product measurements given are rounded. Contact your Tremron Sales Representative or visit our website for exact dimensions.



# Vienna Tumbled

Tumbled to create an aesthetically distressed old-world look, Vienna tumbled pavers of three sizes are installed in random patterns to lend a stunning, aged mystique to your projects.



Product shown  
in Oak Run.

Also available in  
all standard colors;  
please see pages  
71-73 for more  
information.

Shade variation is inherent in all-natural materials. Colors may vary depending upon manufacturing location. Individual product measurements given are rounded. Contact your Tremron Sales Representative or visit our website for exact dimensions.



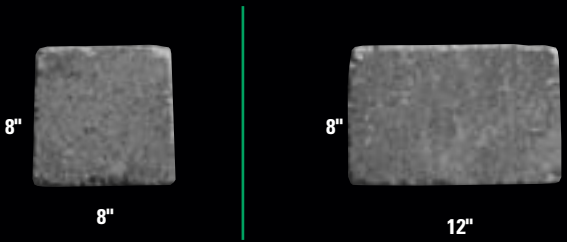
Product shown  
in Cappuccino.

Also available in  
all standard colors;  
please see pages  
71-73 for more  
information.



# Athens Tumbled

The nostalgic look of aged natural stone look  
can be achieved by installing tumbled Athens  
8 X 12 alone or in combination with tumbled  
Athens 8" X 8".



*Shade variation is inherent in all-natural materials. Colors may vary depending upon manufacturing location. Individual product measurements given are rounded. Contact your Tremron Sales Representative or visit our website for exact dimensions.*



Athens Tumbled in Cappuccino



Product shown  
in Ortega.

Also available in  
all standard colors;  
please see pages  
71-73 for more  
information.



**Brussels  
Tumbled**

Create the look of old Europe for your next project. Brussels tumbled features four size variations for the antique appeal of random patterning.



5 7/8"



5"

5 7/8"



5 7/8"

5 7/8"



6 5/8"

5 7/8"



7 1/4"

4 1/4"



4 1/4"

4 1/4"



8 1/2"

**Yorkstone  
Tumbled**

For classic old-world style, tumbled Yorkstone reproduces the antiqued appearance of traditional reclaimed brick in two size variations.



Product shown  
in South Beach.

Also available in  
all standard colors;  
please see pages  
71-73 for more  
information.

Shade variation is inherent in all-natural materials. Colors may vary depending upon manufacturing location. Individual product measurements given are rounded. Contact your Tremron Sales Representative or visit our website for exact dimensions.

Shade variation is inherent in all-natural materials. Colors may vary depending upon manufacturing location. Individual product measurements given are rounded. Contact your Tremron Sales Representative or visit our website for exact dimensions.



Product shown  
in Ortega.

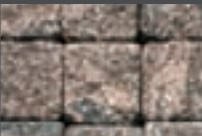
Available in:



Driftwood



Ortega



Oak Run



Granite



Sand Dune



# Tuscany Tumbled

A unique split-faced, tumbled paver mimicking granite cobbles with an exposed aggregate and black granite-like finish. Tuscany offers panache and elegance and is often the paver of choice for high-end entryways and streetscapes. Also an excellent choice for vehicular applications as a traffic-calming device or rumble strip.

Tuscany pavers are manufactured 4" thick.

4"



4"

*Shade variation is inherent in all-natural materials. Colors may vary depending upon manufacturing location. Individual product measurements given are rounded. Contact your Tremron Sales Representative or visit our website for exact dimensions.*



Tuscany in Sand Dune





Park Plaza 12x12 in Riverwood with 4x8 Border in Tan



Park Plaza 12x12 in Sandstone

## *1" Pavers for Style, Elegance and Economy*

Tremron's 1" pavers offer all the beauty and elegance of our 2 3/8" paver line but are thin enough to be installed directly over existing concrete or paved surfaces. Install 1" pavers in any shape or pattern to complement existing landscaping and hug organic, natural lines. An excellent choice for remodeling, our pavers are designed for longevity and are manufactured for tolerance and strength, which means they are perfect for pedestrian areas and can stand up to weather and extremes of heat. Tremron's 1" pavers offer endless possibilities for creative design and artistic style, while never sacrificing practicality or function.

Choose Tremron for your next hardscape remodeling project. Our 1" pavers are perfect for commercial or residential pool decks, lanais, pathways, garden paths, patios, courtyards, plazas, pedestrian malls, condominiums and much more.



Product shown  
in South Beach.

Also available in  
all standard colors;  
please see pages  
71-73 for more  
information.



## Olde Towne 1"

Choose 1" versions of Tremron pavers to install directly over existing concrete or paved surfaces. Add classic European elegance to your hardscape project. The natural cobblestone look, achieved through the random patterning of three sizes of stone, lends long-lasting beauty and old-world charm to any paving project.



4 3/4"



6 1/4"

6 1/4"



6 1/4"

6 1/4"



9 1/2"

*Shade variation is inherent in all-natural materials. Colors may vary depending upon manufacturing location. Individual product measurements given are rounded. Contact your Tremron Sales Representative or visit our website for exact dimensions.*



Product shown  
in Cappuccino.

Also available in  
all standard colors;  
please see pages  
71-73 for more  
information.

## Brick 4"x8"x1"

Choose 1" versions of Tremron pavers to install directly over existing concrete or paved surfaces. A favorite with architects and landscape designers for both commercial and residential projects, our 4 X 8 Brick offers the contemporary sophistication of a simple brick shape to make your choice of laying patterns virtually unlimited.



4"



8"

*Shade variation is inherent in all-natural materials. Colors may vary depending upon manufacturing location. Individual product measurements given are rounded. Contact your Tremron Sales Representative or visit our website for exact dimensions.*



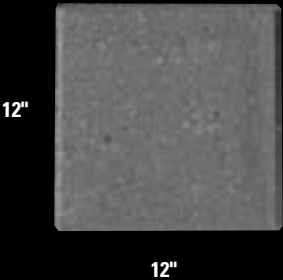
Product shown  
in Riverwood.

Also available in  
all standard colors;  
please see pages  
71-73 for more  
information.



# Park Plaza 12"x12"x1"

Choose 1" versions of Tremron pavers to install directly over existing concrete or paved surfaces. Traditional, elegant and refined, 12" X 12" 1" pavers add high drama and elegance to your remodeling project.



Shade variation is inherent in all-natural materials. Colors may vary depending upon manufacturing location. Individual product measurements given are rounded. Contact your Tremron Sales Representative or visit our website for exact dimensions.

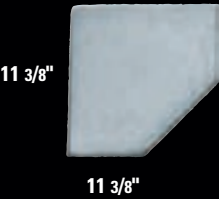


Product shown  
in Sand Dune.

Also available in  
all standard colors;  
please see pages  
71-73 for more  
information.

# Estate Paver 1"

Choose 1" versions of Tremron pavers to install directly over existing concrete or paved surfaces. Ideal for large-scale projects, including courtyards, plazas, pedestrian malls and commercial pool decks. Use Estate Pavers alone or in combination with Park Plaza 12" X 12" to create two unique patterns.



Shade variation is inherent in all-natural materials. Colors may vary depending upon manufacturing location. Individual product measurements given are rounded. Contact your Tremron Sales Representative or visit our website for exact dimensions.



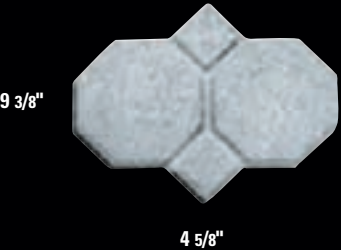
Product shown  
in Sand Dune.

Also available in  
all standard colors;  
please see pages  
71-73 for more  
information.



### Cobblestone 1"

Choose 1" versions of Tremron pavers to install directly over existing concrete or paved surfaces. Create large-scale, old world elegance with a single interlocking stone paver. Cobblestone results in a pleasing paved surface for any commercial or residential application.



*Shade variation is inherent in all-natural materials. Colors may vary depending upon manufacturing location. Individual product measurements given are rounded. Contact your Tremron Sales Representative or visit our website for exact dimensions.*

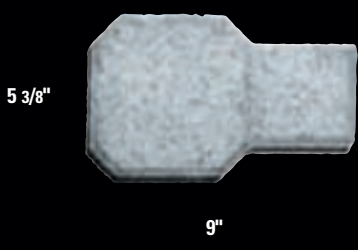


Product shown  
in Mahogany Ash.

Also available in  
all standard colors;  
please see pages  
71-73 for more  
information.

### Décor 1"

Choose 1" versions of Tremron pavers to install directly over existing concrete or paved surfaces. Its combination of two different shapes into one interlocking stone has made Décor a very popular choice for both residential and commercial projects. Choose a look with modern, simple installation and classic, timeless beauty.



*Shade variation is inherent in all-natural materials. Colors may vary depending upon manufacturing location. Individual product measurements given are rounded. Contact your Tremron Sales Representative or visit our website for exact dimensions.*





Olde Towne in South Beach with Bullnose in Salmon



Bullnose in Shellstone Sandstone

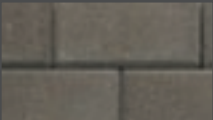
## ***Bullnose With a Distinctive Edge***

For steps or pools, new construction or remodeling, choose from Regular, Classic Remodel or Regular Remodel Bullnose to complete your project with style and panache. Tremron's Bullnose line combines form and function to complement every paver installation or remodel, giving your product a winning edge and a finished profile.

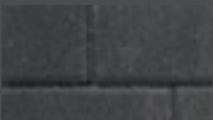


Product shown in Sandstone (left) and Tan (right).

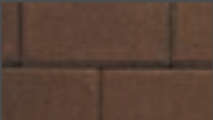
Available in:



Natural



Charcoal



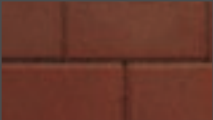
Tan



Dark Orange



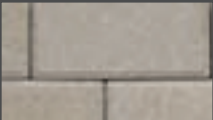
Taupe



Red



Sandstone

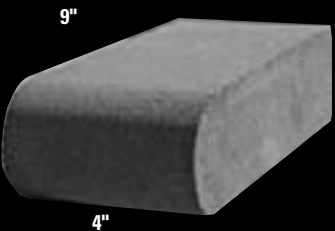


White



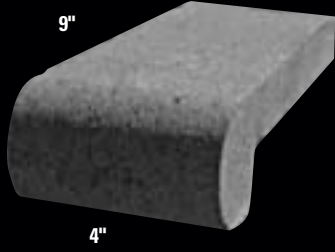
Regular Bullnose

The classic edge for all 2 3/8" paver installations and new construction.



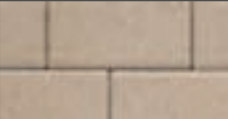
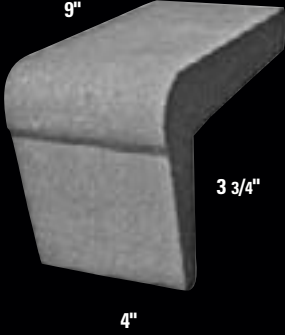
Remodel Bullnose

For use in conjunction with 1" pavers in remodeling projects, Remodel Bullnose offers short nose coverage for a traditional edging on pools, steps and more.

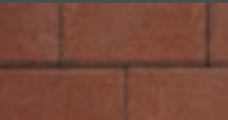


Classic Remodel Bullnose

For use in conjunction with 1" pavers in remodeling projects, Classic Bullnose offers deep nose coverage ideal for swimming pools.



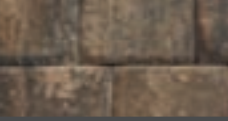
Coral



Salmon



Goldenrod



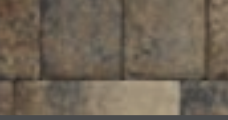
Oak Run



Cappuccino



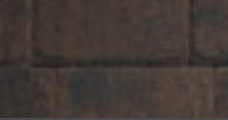
Old Chicago



Sierra



Sand Dune



Sante Fe

Shade variation is inherent in all-natural materials. Colors may vary depending upon manufacturing location. Individual product measurements given are rounded. Contact your Tremron Sales Representative or visit our website for exact dimensions.





Travertine in Gold



Travertine in Noce

## ***Natural Stone, Natural Style***

Tremron's extensive line of natural stone pavers draws upon an ancient practice of using quarried stone to create hardscapes known for drama, elegance and classic, enduring function. Our stone pavers, including the popular Travertine and Slate lines, are mined from ancient stone deposits all over the world, including the site of the same mine that produced the original stone used in the Roman Coliseum. We offer an extensive collection of natural stone products, ideal for residential and commercial installations including driveways, lanais, porches, screen rooms, patios and pool decks, plazas, courtyards, pedestrian malls and more.

With Tremron's natural stone pavers, you'll enjoy the timeless appeal of ancient stone with the elegance and versatility of contemporary design.

Shade variation is inherent in all-natural materials. Colors and finishes may vary, which adds to the rustic all-natural appeal of the stone.



Product shown  
in Roman.



## Travertine

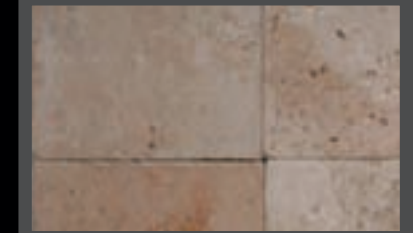
Tremron's Travertine is a natural stone paving material mined from sedimentary rock. Travertine's subtle, regal beauty, resilient strength and natural textures have made it a favorite of builders and architects for thousands of years. All Travertine tiles are paired with complementary bullnose and are meticulously tumbled to enhance the warmth and appeal of the stone.

Available in 6"x12", 12"x12", 16"x16", Ashlar and 24"x24". Also available in 4"x8" and 12"x12" bullnose.



## Travertine Roman

An off-white, vanilla-toned neutral that complements many different applications, from pool decks to sun rooms to lanais. With its warm natural texture and elegant style, Roman is the Travertine of choice for those seeking bright, simple, aesthetic design.



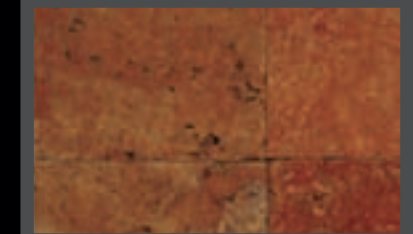
## Travertine Noce

Slightly darker than Roman, with a warm taupe cast, Noce offers subtlety and understatement to a wide variety of applications. Noce features a naturally distressed finish and an ancient, classic appeal.



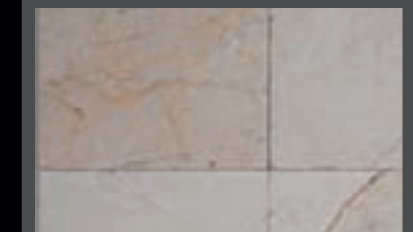
## Travertine Gold

The strongest and boldest of the Travertine Collection, Gold is an excellent choice for applications in which color and substance are desired. The eclectic appeal of Gold makes it a premium choice for a wide variety of areas including walkways, pool decks and porches.



## Travertine Crema

Crema is the smoothest and densest of the Travertine Collection, offering a good neutral color accented with warm taupes and pink veining. The most elegant stone in the collection, Crema is ideal for patios and lanais.



## Travertine Mocha

Warm, sleek and elegant, Travertine Mocha offers clean tones and a bright aspect for those looking for a warmer alternative to Crema. Mocha features rustic veining and a natural texture.



Shade variation is inherent in all-natural materials. Colors may vary depending upon manufacturing location. Individual product measurements given are rounded. Contact your Tremron Sales Representative or visit our website for exact dimensions.



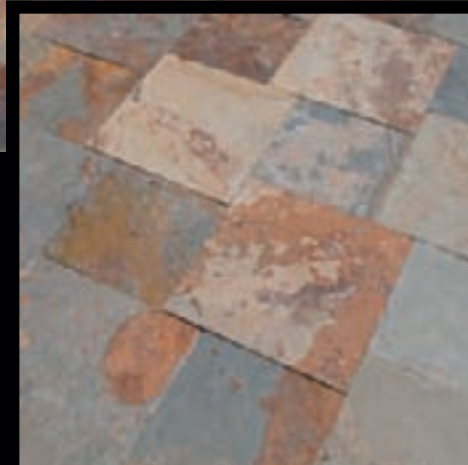
Product shown as  
12x12 and 16x16  
in Rust.



## Slate

The Tremron Group's slate paver line lends warmth and classic style to a wide range of projects including backyard patios, outdoor kitchens, walkways, sitting areas and more. Quarried from natural stone mines, our slate pavers create an unmistakably classic look—with rich colors and an elegant finish that have made this choice one of Tremron's most popular offerings to date.

Available in 12x12 and 16x16.



## Slate Black

Unique among our Slate offerings, Slate Black is a deep solid, with consistent tones for a uniform appearance. The look is understated, refined and rustic, with conservative undertones and a reserved theme. All Tremron Slate products are cut, gauged and cleaved for a natural appearance and an easy-care texture.



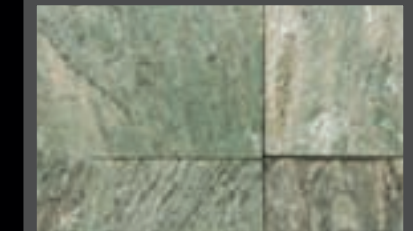
## Slate Rust

Variegated deep reds, tans, taupes and greens blend in this vintage, earthy selection, making it the most dramatic in Tremron's Slate line. Plus, significant variation within batches allows for a random, rustic effect. All Tremron Slate products are cut, gauged and cleaved for a natural appearance and an easy-care texture.



## Slate Blue

With tones ranging from deep blues to deep greens, Slate Blue offers a cool, variegated surface reminiscent of traditional, Colonial American flagstone. All Tremron Slate products are cut, gauged and cleaved for a natural appearance and an easy-care texture.



## Slate Yellow

Choose a Slate offering variegated whites, off-whites, yellows and light greens for brightness and style. Slate Yellow is strong, upscale and modern, lending a dramatic statement to patios, pool decks, lanais and more. All Tremron Slate products are cut, gauged and cleaved for a natural appearance and an easy-care texture.







Pisa2 in Coral



Stonegate in Santa Fe

## *Retaining Walls Designed for Beauty and Function*

Retaining walls hold back soil or rock from a structure or specific area. They can provide support for grade changes and can prevent erosion. In addition, retaining walls—whether used as retention devices or as freestanding vertical elements like mailboxes or grill enclosures—provide a beautiful, functional alternative to traditional hardscapes and can become a centerpiece in landscape or architectural design. Tremron's line of retaining wall products offer the natural appeal and flexibility that our architects, installers, contractors and homeowners are looking for. They're easy to install and are extremely low maintenance.

Tremron is an exclusive manufacturer of the popular Keystone® landscape product retaining wall systems from Keystone Walls, a subsidiary of the nation's leading supplier of earth stabilization solutions. We also manufacture time-tested Pisa2® and Roman Pisa® retaining walls from RisiStone, a leader in retaining wall products since 1974.

Because Tremron's retaining wall products are manufactured at the same sites as our extensive paver lines, you can be sure that the retaining wall and paver products you choose for your hardscape designs will be coordinated, consistent and complementary.

Choose from our diverse line of easy-to-install retaining wall products to make your next hardscape product easy.



Product shown in Oak Run (top) and Santa Fe (bottom).

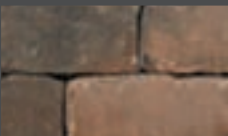
Available in:



Tan



Granite



Oak Run



Santa Fe



Timberwood



Keystone® Stonegate™

Choose the old world charm of tumbled, weathered cut stone to create patterned or irregular single-sided or double-sided walls that mimic the look of a quaint European town. The system features columns and pilasters as well as a patented fiberglass pin connection for easy installation.

Stonegate is ideal for freestanding seats or retaining walls. Stonegate’s smooth face looks like cut stone and presents a refined look for multiple freestanding wall options and larger structural projects.

6" h



6"/4" w

6" h



12"/10" w

6" h



16"/14" w

Shade variation is inherent in all-natural materials. Colors may vary depending upon manufacturing location. Individual product measurements given are rounded. Contact your Tremron Sales Representative or visit our website for exact dimensions.

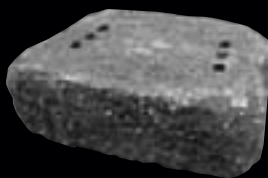


Keystone® Palazzo™ Tumbled

A multifunctional wall finished on both sides for residential or commercial garden projects, fire pits, seat walls, plant bedding walls and more. Each Palazzo stone unit is angled on both sides, providing two different face lengths for tight-fitting straight line walls or curves. A natural stone look that’s both functional and beautiful. Ideal for homeowners or weekend do-it-yourself hardscape projects.

Also available in non-tumbled variety.

4" h

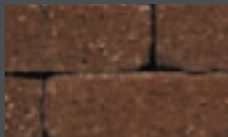


12"/9" w

Shade variation is inherent in all-natural materials. Colors may vary depending upon manufacturing location. Individual product measurements given are rounded. Contact your Tremron Sales Representative or visit our website for exact dimensions.

Product shown in Oak Run.

Available in:



Tan



Granite



Oak Run



Santa Fe

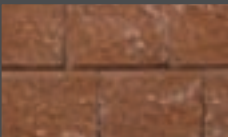


Timberwood

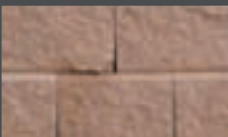


Product shown  
in Santa Fe.

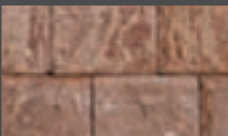
Available in:



Tan



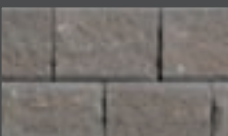
Coral



Timberwood



Sante Fe

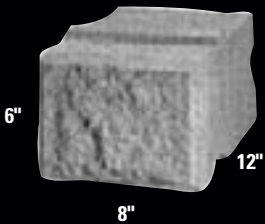


Natural



Pisa2®

RisiStone's Pisa2 is a solid, modular concrete retaining wall system offering superior design flexibility, a desirable quarried stone appearance and one of the highest weight-per-square-foot strengths in the industry. Pisa2 is ideal for stabilizing and containing large or small earth embankments, or for any application requiring management of grade changes. Easy to install and low maintenance, Pisa2 units are manufactured in pairs, face-to-face, and the surface is achieved by factory splitting to provide the rough finish. The system requires no mortar or mechanical fasteners; it uses a patented shear connection that makes the units self-aligning and self-battering.

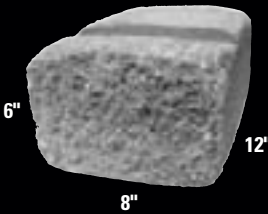


Shade variation is inherent in all-natural materials. Colors may vary depending upon manufacturing location. Individual product measurements given are rounded. Contact your Tremron Sales Representative or visit our website for exact dimensions.



RomanPisa®  
(Tumbled)

RisiStone's tumbled RomanPisa provides a natural, weathered appearance. RomanPisa is tumbled to round off edges and corners and to gouge the face of the stone, resulting in a worn cobbled appearance that looks like real stone, not concrete. The system requires no mortar or mechanical fasteners; it uses a patented shear connection that makes the units self-aligning and self-battering.



Shade variation is inherent in all-natural materials. Colors may vary depending upon manufacturing location. Individual product measurements given are rounded. Contact your Tremron Sales Representative or visit our website for exact dimensions.

Product shown  
in Timberwood.

Available in:



Tan



Coral



Timberwood



Sante Fe



Natural





SF-Rima in Taupe



Turf Block in Natural

## ***Strength to Stand Against Erosion***

Protect the integrity of your landscape, and increase usable land in residential and commercial holdings. Erosion and drainage are important considerations in any landscape plan. Slopes can contribute to heavy storm water runoff, eroding topsoil and threatening the strength of landscapes and hardscapes. Tremron offers the erosion control products to protect your designs and maintain the integrity of your landscaping.

Our products reduce or eliminate storm water runoff, decrease flooding and relieve sewer systems. They also provide a sturdy pavement for vehicular traffic and can be used in a wide variety of applications, from fire routes and parking areas to residential applications such as driveways and patios.

Protect your projects. Choose from Tremron's wide array of easy-to-install and eco-friendly erosion control products.



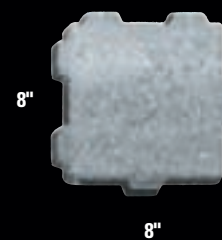
Product shown  
in Taupe.

Also available in  
all standard colors;  
please see pages  
71-73 for more  
information.



## SF-Rima®

SF-Rima permeable pavements reduce or eliminate storm water runoff, decrease flooding and relieve sewer systems. Manufactured 3 1/8" thick, SF-Rima provides a sturdy pavement for vehicular traffic. SF-Rima, with its unique spacer design, can be installed nub to block (1/2" joints) for water drainage or nub to nub (1" joints) for greater water drainage and turf growth. Perfect for both residential and commercial uses.



*Shade variation is inherent in all-natural materials. Colors may vary depending upon manufacturing location. Individual product measurements given are rounded. Contact your Tremron Sales Representative or visit our website for exact dimensions.*

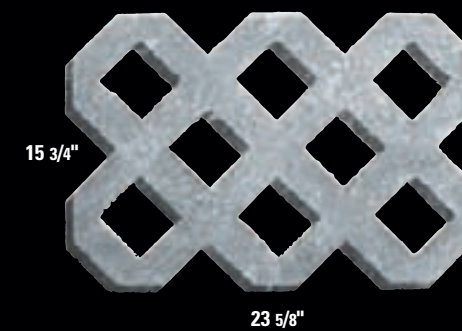


Product shown  
in Natural.



## Turfblock

Providing a permanent solution to soil erosion problems, Turfblock can be used in a wide variety of applications, from fire routes and parking areas to residential applications such as driveways and patios. Turfblock apertures can support turf growth or decorative gravel. Ideal for slope protection on embankments.



*Shade variation is inherent in all-natural materials. Colors may vary depending upon manufacturing location. Individual product measurements given are rounded. Contact your Tremron Sales Representative or visit our website for exact dimensions.*



Product shown  
as Olde Towne  
in Timberwood.

Also available in  
all standard colors;  
please see pages  
71-73 for more  
information.



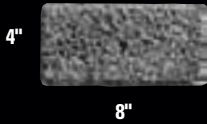
Pervious Pavers

A permeable, environmentally-friendly interlocking paver designed to allow water to flow through the paver and be recaptured in the subsoil.

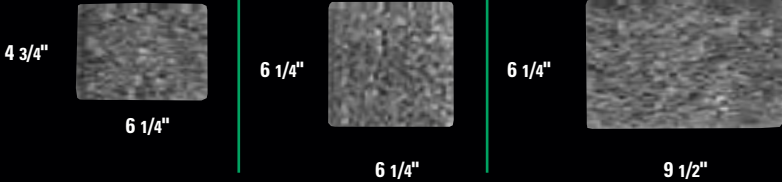
Available in 4" X 8" or Olde Towne sizes.



Brick 4x8



Olde Towne



Shade variation is inherent in all-natural materials. Colors may vary depending upon manufacturing location. Individual product measurements given are rounded. Contact your Tremron Sales Representative or visit our website for exact dimensions.



Pervious Pavers 4x8 in Timberwood





Bishop Hat in Sand Dune with Park Plaza 8x8 Insets in Sandstone



Vienna in Oak Run

## ***Paver Care, for Today and Tomorrow***

Your pavers represent a significant investment in your residential, commercial, industrial or civic hardscape. Keep them as beautiful and structurally sound as the day they were installed with high-quality cleaning, sealing and care products from Tremron. Tremron is your distributor for products from Techni-Seal®, a leader in the manufacture of polymeric sand, sealant and adhesive products for the paver and hardscape industries. Our products will help you deal with even the most stubborn tar, grease or rust stains that threaten the beauty of your pavers. And our sealers and adhesives will insure your hardscape project is protected and structurally sound from day one.

In all cases, to ensure results will meet your expectations, always test sealant and adhesive products on a small hidden area.





### **Polymeric Sand**

Stays within joints better than any other sand, and provides stability and durability to paved surfaces. Inhibits weed growth and resists insect infestation. Available in two colors: Grey or Tan.



### **WL4 Protective Sealant**

Color enhancing sealant. Provides a wet look and forms a long-lasting protective film.



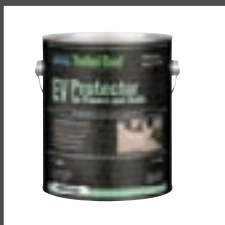
### **WLP Protective Sealant**

Color enhancing sealant. Provides an elegant matte finish. Non-film-forming; won't make surface slippery.



### **IN Protector**

Invisible sealant. Protects without changing appearance. Protects against oil, water and dirt. Non-film-forming; won't make surface slippery. Water-based; environmentally friendly.



### **EV Protective Sealant**

Natural look sealant. Preserves the natural look of pavers. Forms a highly resistant shield. Water-based; environmentally friendly.



### **Paint, Tar and Rubber Remover**

Effectively dissolves paint, tar or bitumen, rubber and chewing gum.

### **Masonry Adhesive**

Ideal for decorative walls. Super-adherent on dry or wet surfaces. Perfectly resists the weather, yet remains flexible and economical.



### **Hardscape Cleaner**

Dislodges ground-in dirt prior to sealant application on efflorescence-free surfaces. Ensures even cleaning and brightens up colors. Ideal for previously sealed surfaces.



### **Efflorescence Cleaner**

Dislodges efflorescence and ground-in dirt prior to sealant application. Ensures even cleaning and brightens up colors. Contains no muriatic/hydrochloric acid.



### **Dirt and Grease Cleaner**

The most powerful cleaner available; dissolves, dislodges and encapsulates grease. For bare or sealed surfaces. Easy to rinse.



### **Rust Remover**

Effectively removes stains caused by steel, rusted water, fertilizer, etc. For bare or sealed surfaces. Contains no muriatic/hydrochloric acid.



### **Sprayer**

Connects to a garden hose to facilitate application and provide a perfect water-cleaner mix automatically.

Roller applicator also available.







Brick 4x8 in Dark Orange, Tan and Charcoal



## *Color Selections*

Rich, vibrant, natural colors are a hallmark of Tremron’s pavers. All Tremron pavers are “color-through,” which means the color is blended into the stone during the manufacturing process, not simply added to the face of the paver, as is the case in most common color veneers.

Your pavers are as unique as your project. And it’s important to remember that the actual pavers you receive may appear different, when viewed in natural light, than the colors represented in this studio photography. Tremron pavers are made from natural materials, so you may notice slight color variations, minor chips or visible aggregates among the pavers delivered for your project. In addition, colors may vary among pavers manufactured at our three Florida plants. Don’t worry—these variations, when handled by an experienced installer, will lend your project a genuine, realistic appearance that will enhance the natural beauty of the stone. Your installer will select stones from a variety of bundles and will lay them in a random manner to achieve a sophisticated and aesthetic visual effect.

Contact your Tremron Group representative for complete color selection availability.



Grey Solids



Natural

Charcoal

Tan

Dark Brown

Dark Orange

Taupe

Red

White Solids



Sandstone

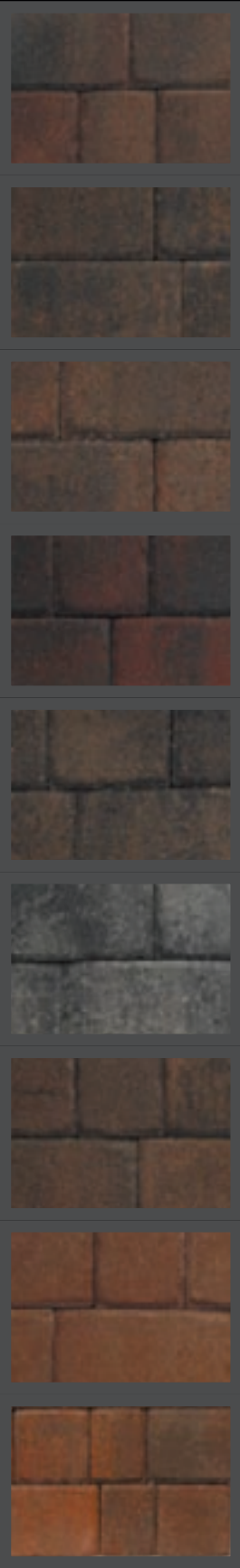
White

Coral

Salmon

Goldenrod

Grey Blends



Heritage

Santa Fe

Ortega

Rustic

Driftwood

Granite

Coffee

Redwood

Burnt Oak

White Blends



Oak Run

South Beach

Cappuccino

Riverwood

Old Chicago

Sierra

Sand Dune

Mahogany Ash

Timberwood

Shade variation is inherent in all-natural materials. Colors may vary depending upon manufacturing location.





## *Tremron Group Promise*

Tremron Group manufactures the highest-quality interlocking brick pavers and retaining wall products in America, utilizing computer controlled state-of-the-art equipment, which provides products that meet or exceed ASTM Standard C-936-96. We stand by the strength and structural integrity of our paving stones.

Our commitment is to ensure the highest quality possible. Due to the nature of the product, color variances and the occurrence of efflorescence cannot be guaranteed. For best results in maintaining color consistency, pavers must be installed from several bundles at a time.

Tremron Group. Our promise of quality is cast in stone.

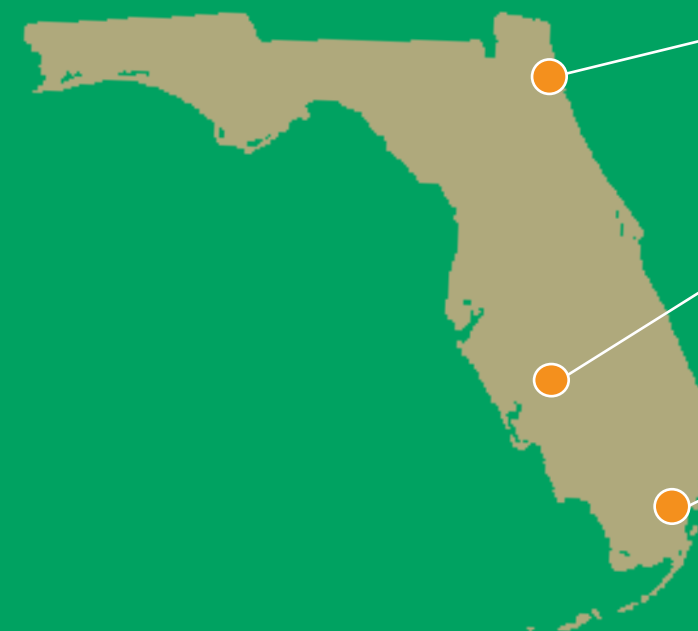




Olde Towne in South Beach

***Tremron***  
**GROUP** *we make it easy*

## *Our Locations*



**JACKSONVILLE**

2885 St. Clair Street  
Jacksonville, FL 32254  
866.358.5900 or  
904.359.5900  
Fax 904.359.5901

**ARCADIA**

3144 Highway 17 NE  
Arcadia, FL 34266  
877.490.0990 or  
863.491.0990  
Fax 863.491.8990

**MIAMI**

11321 NW 112th Court  
Medley, FL 33178  
800.567.1480 or  
305.825.9000  
Fax 305.823.6614