



OldcastleCoastal™

Build On Us™

(888) 682-7622

www.oldcastlecoastal.com

Pedestrian Friendly, Environmentally Advanced

The Aqua-Bric® Series

Advanced Pavement Technology presents a pedestrian-friendly stormwater management system featuring Aqua-Bric® permeable pavers. The smooth, flat surface created using Aqua-Bric® meets ADA standards and is a superior choice for areas with high foot traffic – even for pedestrians in high heels or wheel chairs. Ideal for plazas, walkways, entrances and parking lots*, Aqua-Bric® is used by Advanced Pavement Technology to implement the environmentally sound Bio-Aquifer Storm System (BASS™).

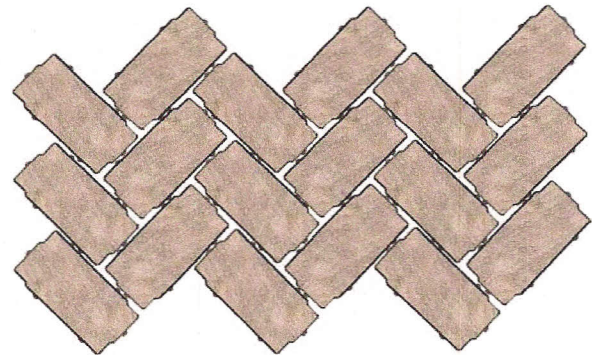
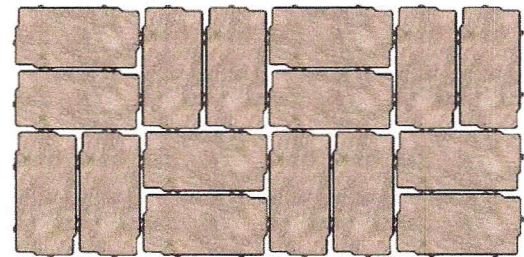
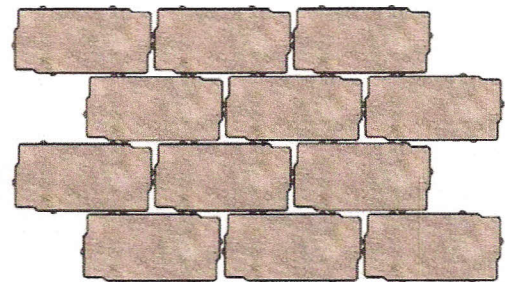
See back side for more information.



**Aqua-Bric®
Type 1**

Dimensions:

Nom. 5" x 10" x 2 3/8"



Benefits of BASS™ with Aqua-Bric®

- Meets pedestrian slip resistance standards from the Americans with Disabilities Act (ADA) Architectural Guidelines, as well as EPA storm-water requirements
- Provides smooth surfaces with minimal openings to make walking more comfortable
- Allows for rapid removal of stormwater through void openings
- Eliminates standing water for plazas and walkways without sloping
- Maximizes design flexibility by enabling a wide range of creative patterns
- Simplifies maintenance in climates with ice and snow

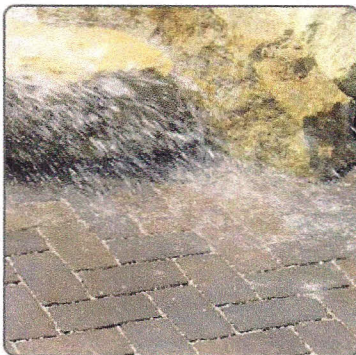
Patent pending. Additional sizes available.

** May be used in light vehicular designs with 4" x 8" x 3 1/4" pavers; see Advanced Pavement Technology for site-specific details.*

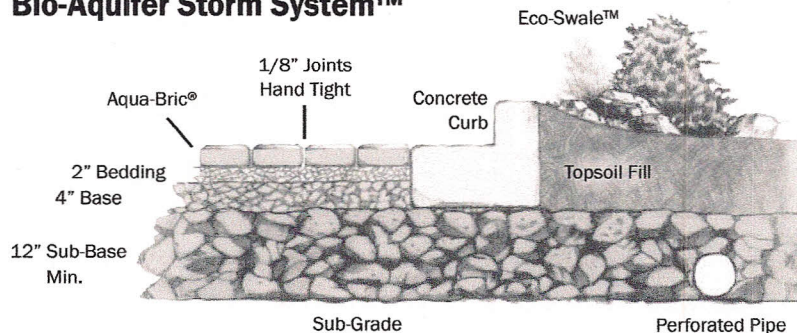
When used as part of Advanced Pavement Technology's exclusive BASS™ method, these pavers allow for natural stormwater drainage and groundwater recharge, making the paved surface ecologically sound and economically smart. In fact, the BASS™ method is an acceptable post-structural Best Management Practice (BMP) used to meet the federal stormwater management requirements. Roads and parking lots created using BASS™ with these permeable pavers offer vast benefits:

- Meeting EPA stormwater requirements with a superior solution for NPDES Phase II
- Achieving significant savings and fostering ecological integrity through enhanced land planning
- Outperforming other systems in harsh climates or with freeze/thaw cycles
- Delivering maximum strength to handle heavy vehicular traffic (Aqua-Loc™ and Eco-Brick™)
- Producing remarkable curb appeal and convenient maintenance access
- Providing outstanding results on a 50-year life-cycle cost analysis

Aqua-Bric®, **Aqua-Loc™**, **Eco-Brick™** and **Aqua-Bricloc®** are licensed shapes, available only from Advanced Pavement Technology or selected national manufacturers. The pavers are manufactured according to ASTM C936 specifications. They can be produced in a variety of custom colors and installed using manual or mechanical methods. The new paver shapes can also be combined during installation to achieve a number of attractive patterns in an ecological pavement system.



Bio-Aquifer Storm System™



Ecologically sound. Economically smart. And exclusively from Advanced Pavement Technology.

For more information about the BASS™ program, please contact Advanced Pavement Technology toll-free at (877) 551-4200 or visit our website at www.advancedpavement.com.



OldcastleCoastal™

Build On Us™

(888) 682-7622

www.oldcastlecoastal.com

Ecological Paver Systems Division

67 Stonehill Road Oswego, Illinois 60543

Toll-free (877) 551-4200 | (630) 551-4200 | Fax (630) 551-4225

crt@advancedpavement.com | pat@advancedpavement.com

www.advancedpavement.com

